

GLENWOOD COLLECTION

THE TOWNSON BAYVIEW

B14TH85

66 INGERSOLL LANE, RICHMOND HILL

RLT-05 INT END OPT GROUND

ELEV. B | 2,539 SQ. FT.

4 BEDROOM | 3 BATH & 1 POWDER

SPACIOUS HOME OFFERS FLEXIBLE OPTIONS

- Ground floor suite
- 5" wide laminate flooring throughout
- Upgraded kitchen island
- Stained oak staircase
- 5 Appliances
- 10 ft. ceilings on the main floor
- Smooth finish ceilings throughout
- Tall upper kitchen cabinets
- Spacious kitchen island

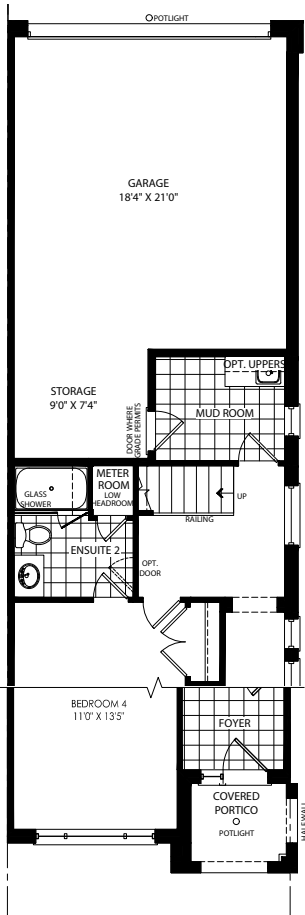
FRONT ELEV. A



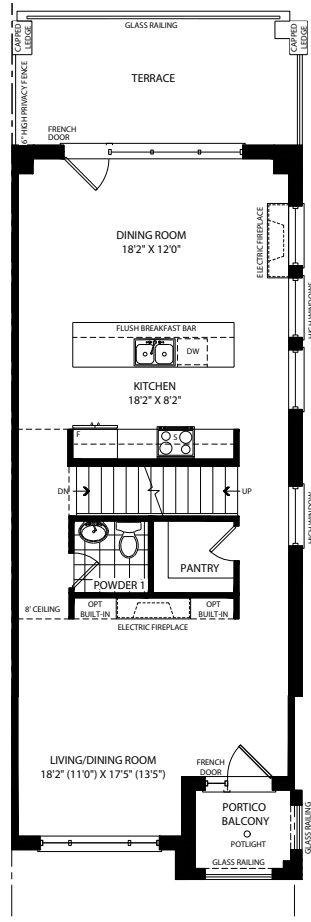
REAR ELEV. A



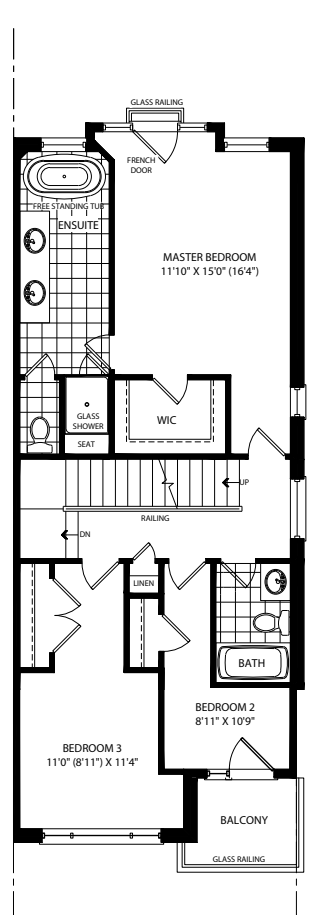
INT END OPT GROUND



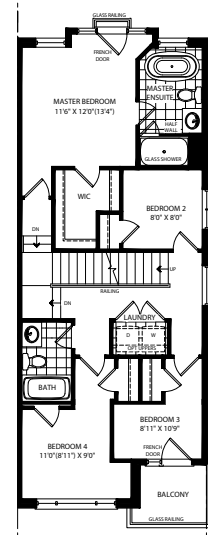
MAIN



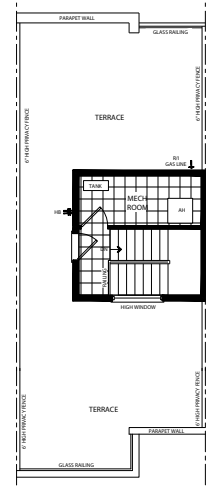
THIRD



OPTIONAL THIRD



TERRACE



Plan is not to scale and all illustrations are artist concept only. Dimensions, specifications, layouts and materials are approximate only and are subject to change without notice. Ceiling heights are approximate. Tile patterns may vary. Window size and location may vary. Actual usable floor space may vary from stated floor area. Bulkheads required for mechanical purposes such as kitchen and washroom exhausts and heating and cooling ducts have not been indicated. Balcony location(s) and sizes vary per floor. Furniture shown is displayed for illustration purposes only and are not included in the sale price. Houses are sold unfurnished. E.80.E.

Contact Us Today
to Book an Appointment
647-205-8738
bayview@priMont.com