

NOA 41-06

41 ft. - 2,370 Sq.ft.



Elevation A
2,370 Sq.ft.



Elevation B
2,370 Sq.ft.





NORTH OAKVILLE

NOA 41-06

41 FT.

2,370 Sq.ft.
4 Bedrooms
2.5 Bathrooms
Family Room

Finished
Basement
803 Sq.ft.

PLAN A

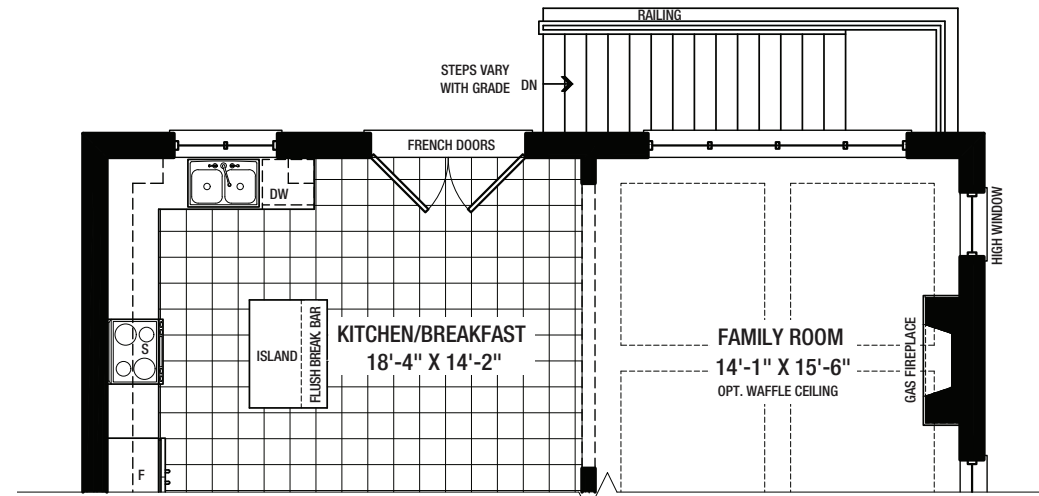


PLAN B

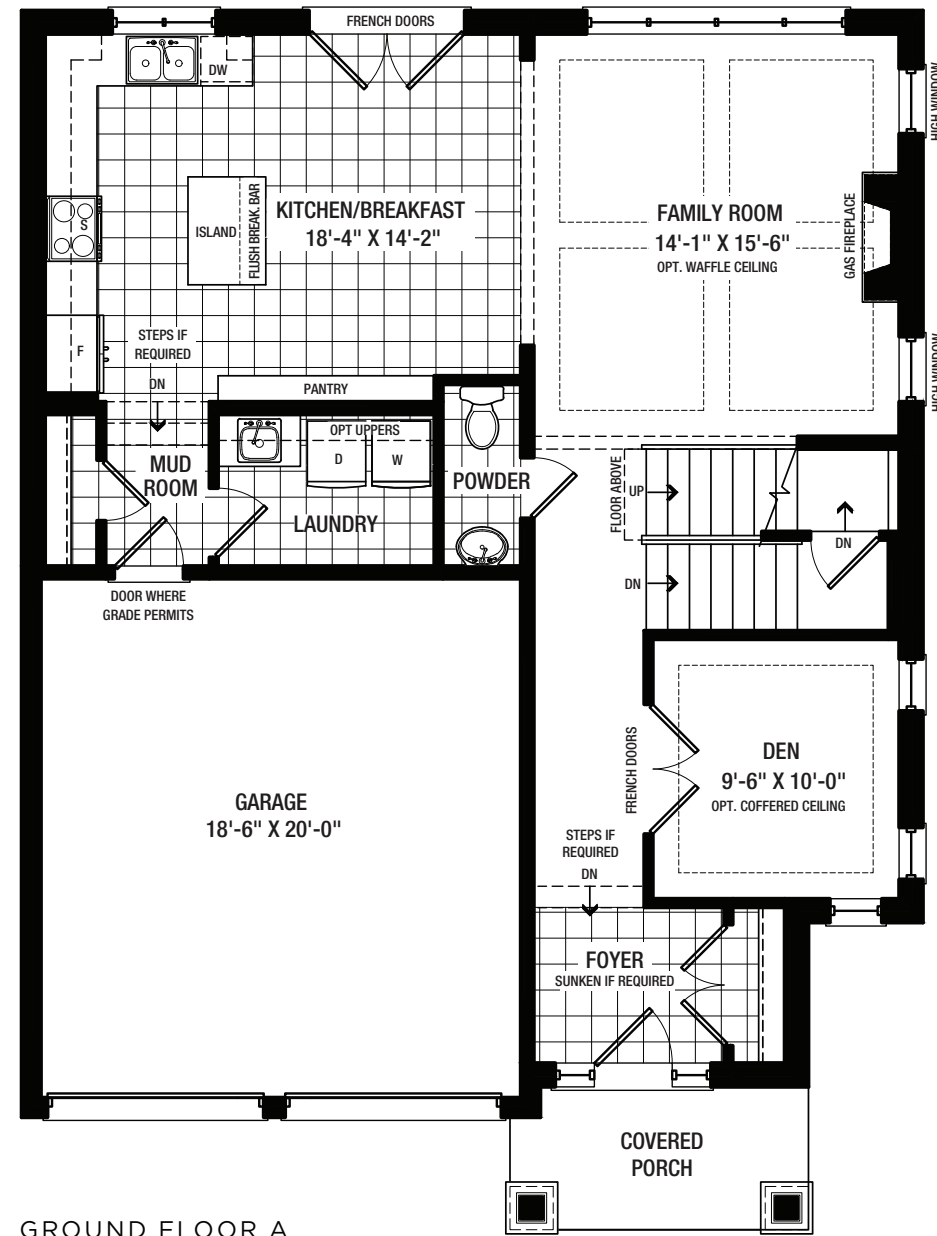


Disclaimer

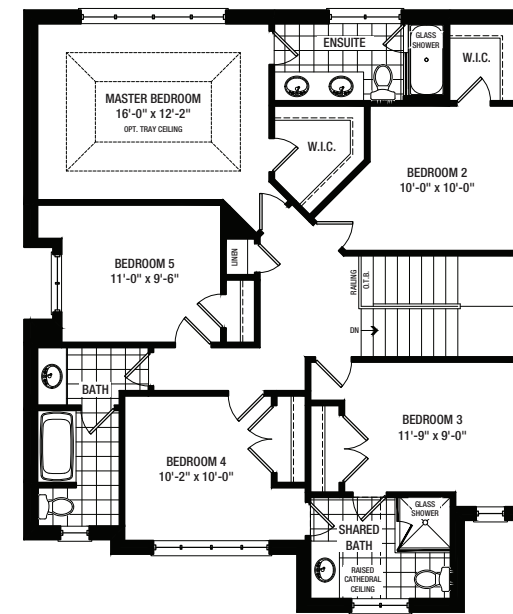
All dimensions are approximate. Information subject to change without notice. The square footage is calculated from the outside dimension of the building on the first and second floor and includes the finished area of the basement if applicable. Garages, attics and unfinished area in the basement are not included in calculations. Basement columns, hot water heater and furnace are not shown and will be placed based on builder's requirements. Number of steps and railings provided may vary due to grade. Windows vary as per elevation. Actual useable floor space may vary from the stated floor area. E.&O.E. - D.O.P. 08/31/18.



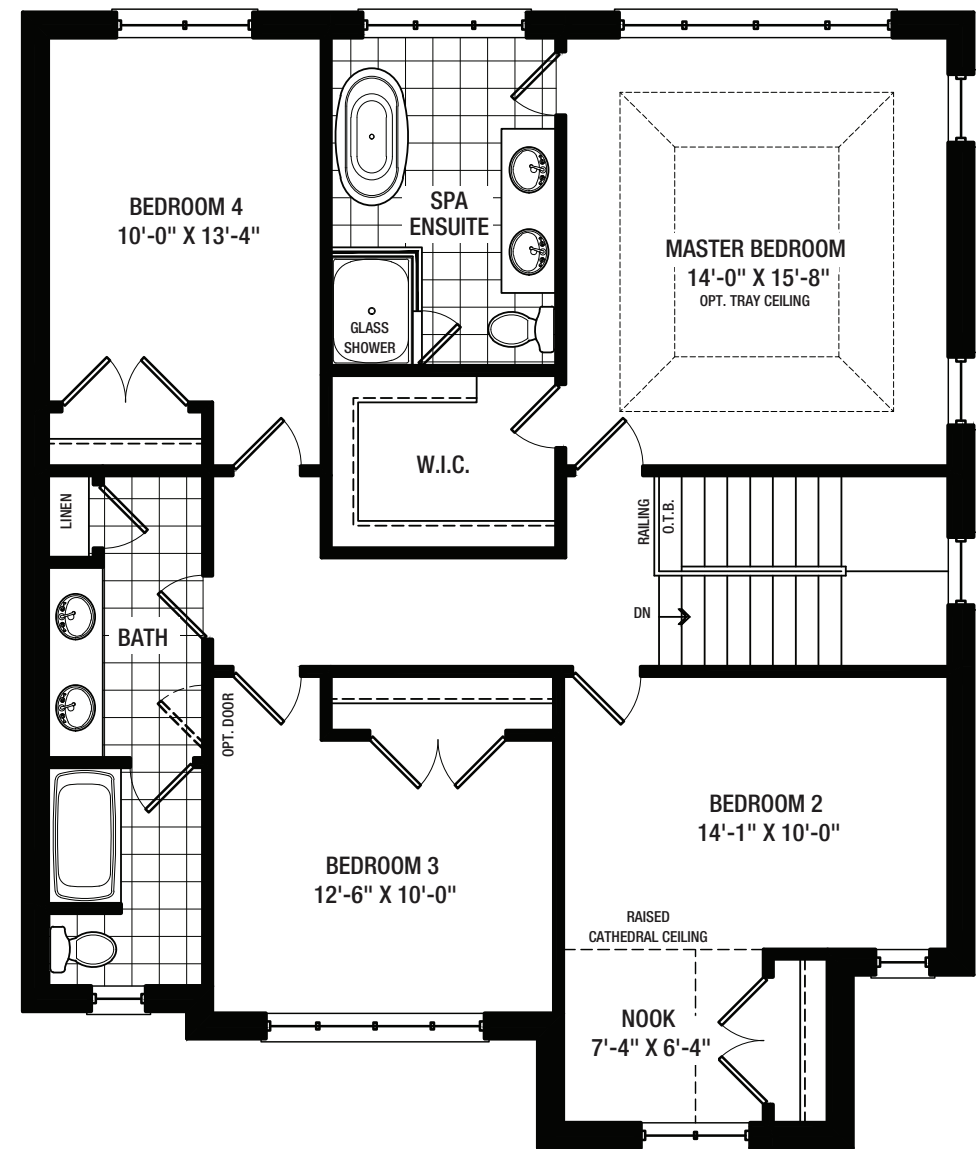
OPT. WALK-UP GROUND FLOOR A & B



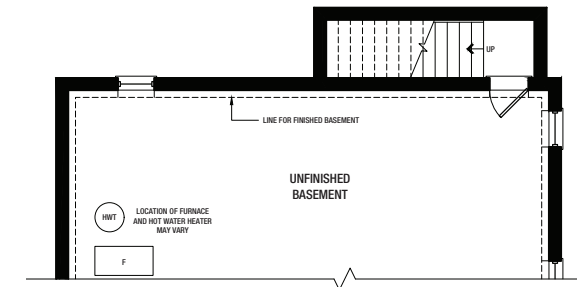
GROUND FLOOR A



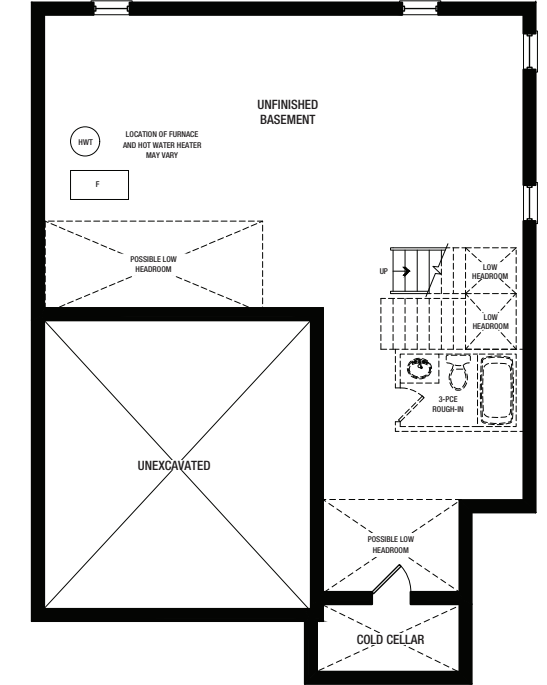
OPT. SECOND FLOOR A FLOOR 5 BEDROOM PLAN



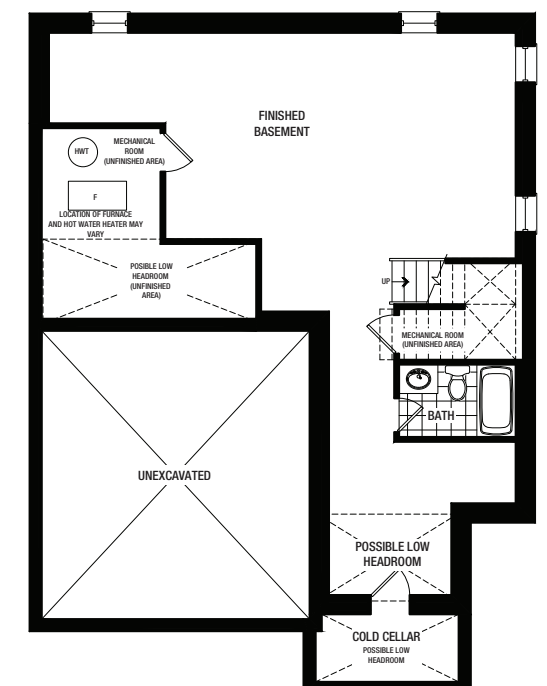
SECOND FLOOR A



OPT. WALK UP BASEMENT A & B



UNFINISHED BASEMENT A



FINISHED BASEMENT A (OPTIONAL)