

# NOA 38-06

38 ft. - 2,096 Sq.ft.



Elevation A  
2,096 Sq.ft.

Elevation B  
2,096 Sq.ft.





NORTH  
OAKVILLE

NOA 38-06

38 FT.

2,096 Sq.ft.  
4 Bedrooms  
2.5 Bathrooms  
Family Room

Finished  
Basement  
707 Sq.ft.

PLAN A

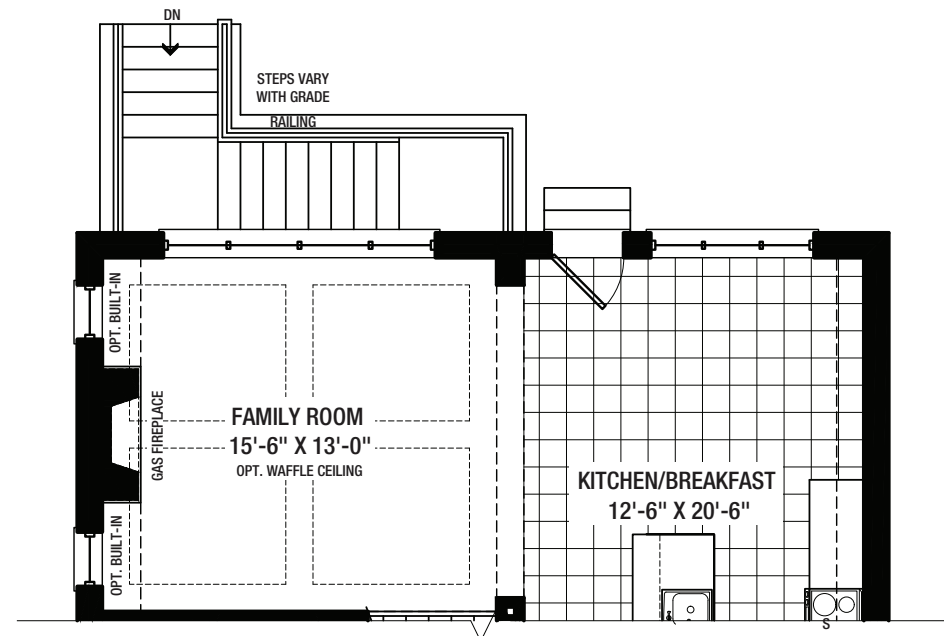


PLAN B

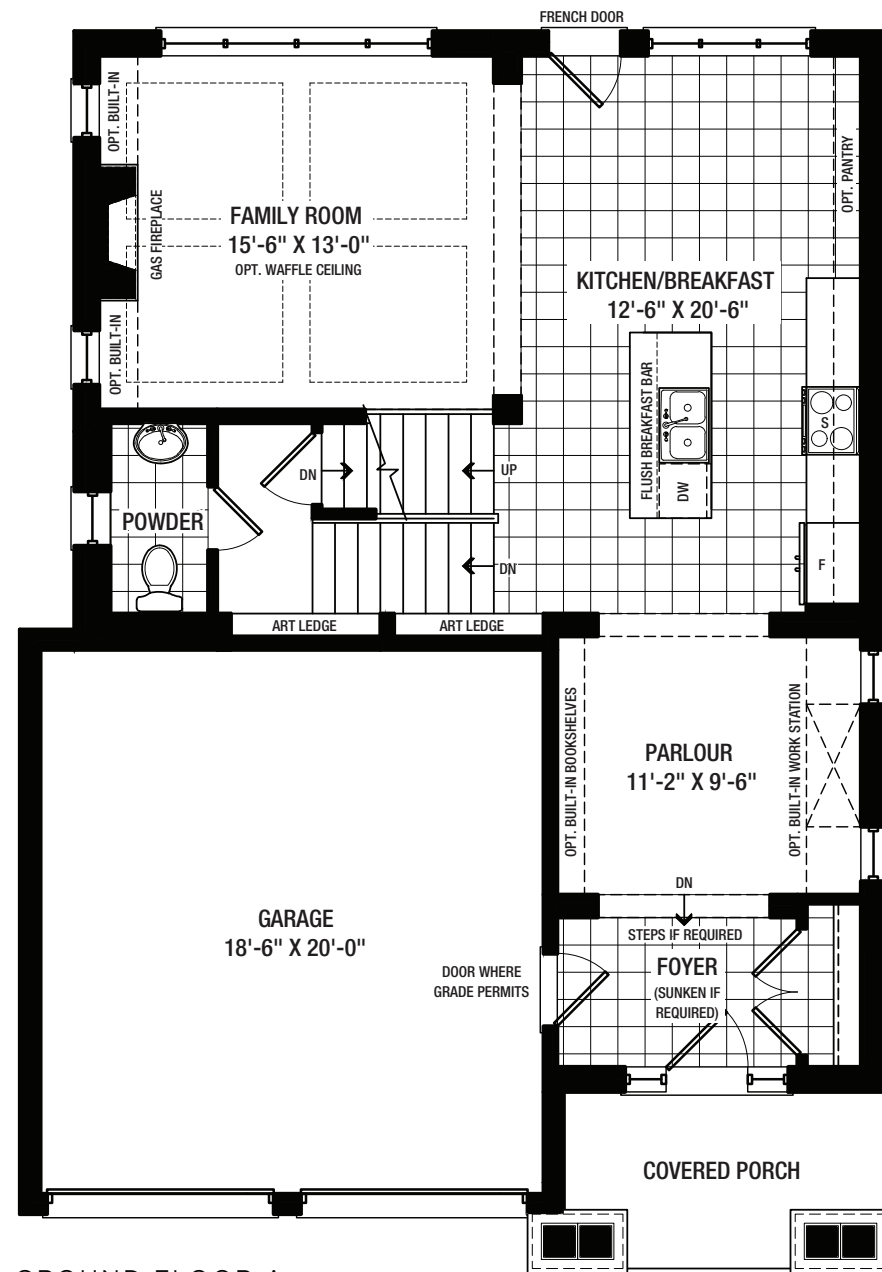


Disclaimer

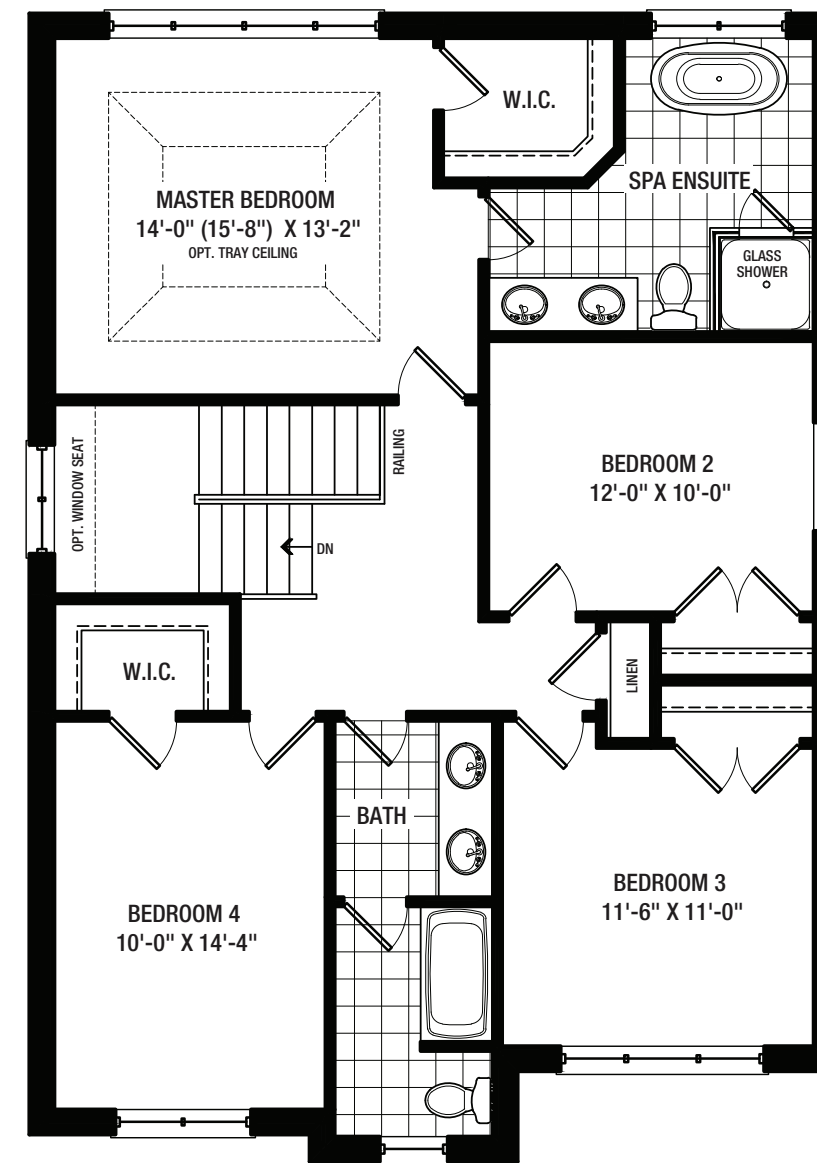
All dimensions are approximate. Information subject to change without notice. The square footage is calculated from the outside dimension of the building on the first and second floor and includes the finished area of the basement if applicable. Garages, attics and unfinished area in the basement are not included in calculations. Basement columns, hot water heater and furnace are not shown and will be placed based on builder's requirements. Number of steps and railings provided may vary due to grade. Windows vary as per elevation. Actual useable floor space may vary from the stated floor area. E.&O.E. - D.O.P. 08/31/18.



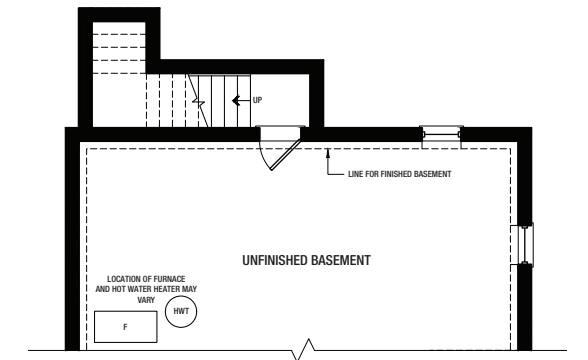
OPT. WALK-UP GROUND FLOOR A & B



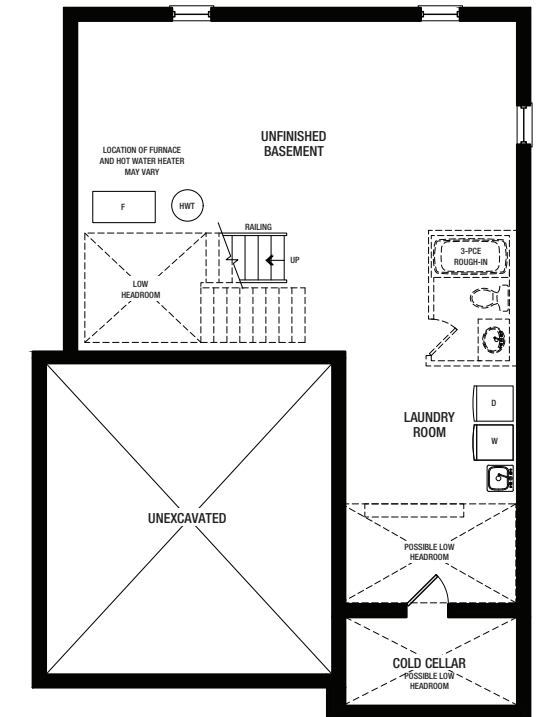
GROUND FLOOR A



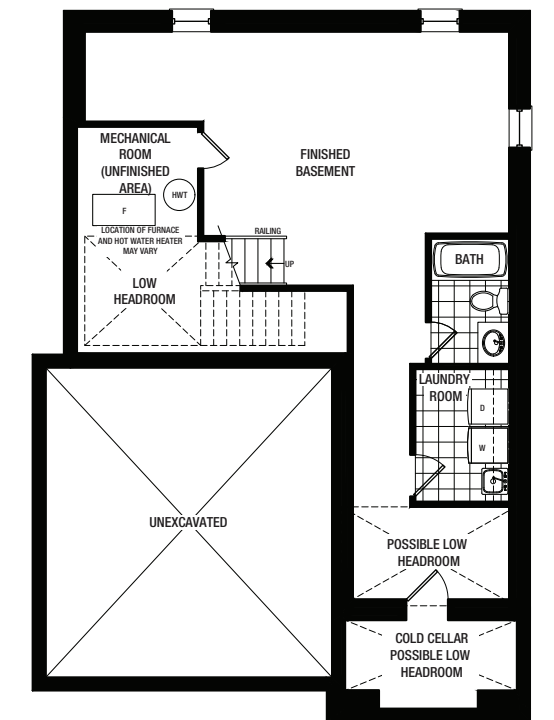
SECOND FLOOR A



OPT. WALK-UP BASEMENT A & B



UNFINISHED BASEMENT A & B



FINISHED BASEMENT  
A & B (OPTIONAL)